

# U.S. National Ice Center

## PRESS RELEASE

### FOR IMMEDIATE RELEASE

Contact: LTJG Jared Doris, USN

[NIC.PAO@noaa.gov](mailto:NIC.PAO@noaa.gov)

301-943-6977



## Iceberg B-22J Has Calved From B-22H

11SEP2025, SUITLAND, MD — The U.S. National Ice Center (USNIC) has confirmed that iceberg B-22J (Figure 1, below) calved from the iceberg B-22H. As of August 30, B-22H was centered at 71° 50' South and 173° 30' West and measured 9 nautical miles on its longest axis and 7 nautical miles on its widest axis. As of 30 August, B-22J was centered at 73° 58' South and 173° 15' West and measured 9 nautical miles on its longest axis and 5 nautical miles on its widest axis.

The new iceberg was first spotted and confirmed by USNIC Master Ice Forecaster, Britney Fajardo, using the Sentinel-1 image below.

Iceberg names are derived from the Antarctic quadrant in which they were originally calved. The quadrants are divided counter-clockwise in the following manner:

- A = 0-90W (Bellingshausen/Weddell Sea)
- B = 90W-180 (Amundsen/Eastern Ross Sea)
- C = 180-90E (Western Ross Sea/Wilkesland)
- D = 90E-0 (Amery/Eastern Weddell Sea)

When first sighted, an iceberg's point of origin is documented by USNIC. The letter of the quadrant, along with a sequential number, is assigned to the iceberg. For example, C-19 is sequentially the 19th iceberg tracked by USNIC in Antarctica between 180-90E (Quadrant C). Icebergs with letter suffixes have calved from already named icebergs, where the letters are added in sequential order. For example, C-19D is the 4th iceberg to calve off the original C-19 iceberg.

Iceberg positions are analyzed weekly and are available on the USNIC webpage at:  
<https://usicecenter.gov/Products/AntarcIcebergs>

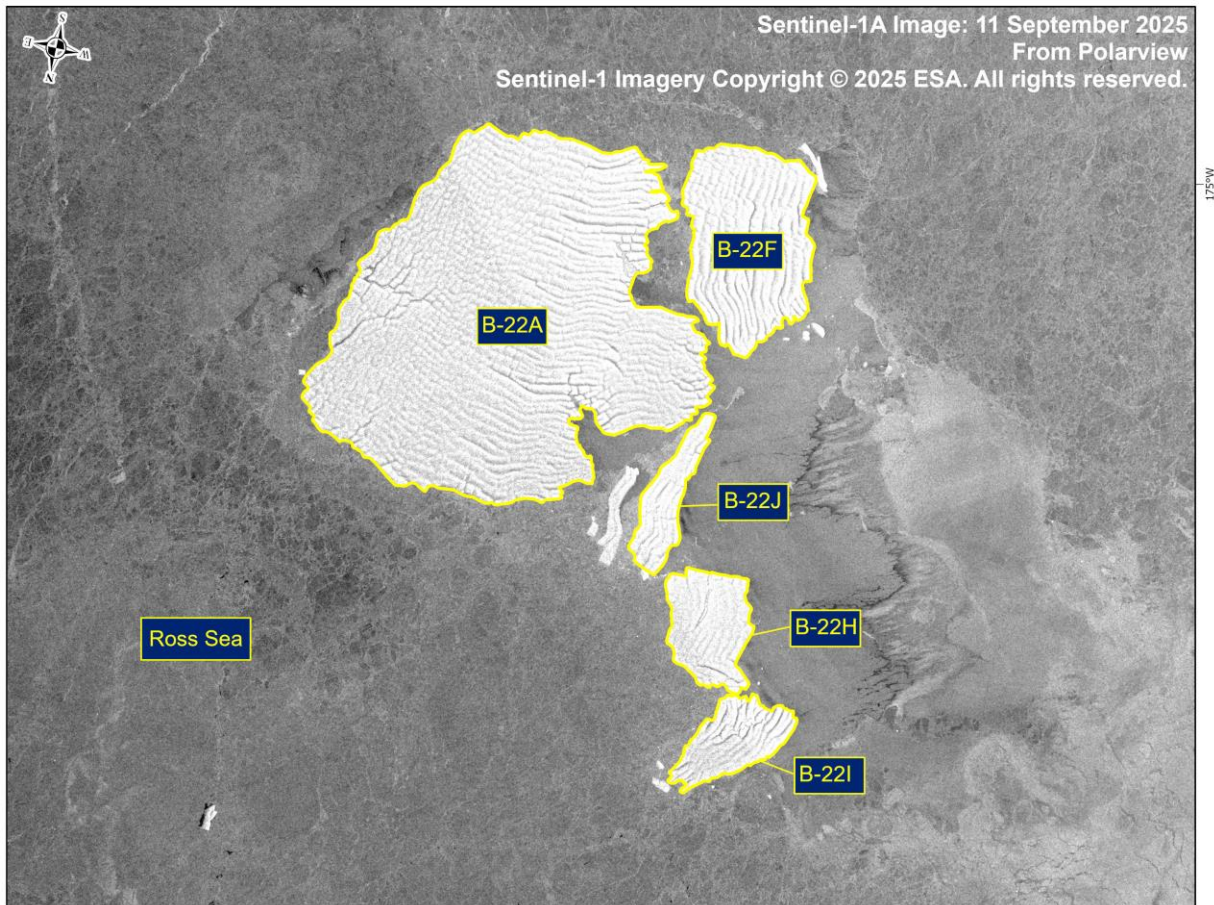


Figure 1: Sentinel-1 image of icebergs B-22A, B-22F, B-22H, B-22I, and B-22J from September 11, 2025.

The USNIC, in collaboration with its global partners, empowers mariners and Naval forces operating in polar, subpolar, and Great Lakes regions with authoritative and timely snow, sea- and lake-ice products and forecasts. USNIC safeguards life and property at sea, defends access and commerce, and further enhances Naval maneuver and superiority. To access daily products, weekly products, archival data and much more of USNIC data in various formats, visit the USNIC webpage at: <https://usicecenter.gov/Products>.

For more information, please contact:  
 U.S. National Ice Center  
 Command Duty Officer  
 E-mail: [nic.cdo@noaa.gov](mailto:nic.cdo@noaa.gov)  
 Voice: 301-943-6977  
 Visit us on Facebook at: <https://www.facebook.com/usnatice/>

